

Procombi Exclusive

High Efficiency Band A Boilers



Professional heating and plumbing products

NEW

Procombi Exclusive

Representing the next generation in Pro Combination boilers, the A-rated Exclusive boilers offer state-of-the-art technology in a practical and compact unit.

Supplied with a horizontal flue and timer, the boiler is available in three outputs of 24, 30 and 35kW.

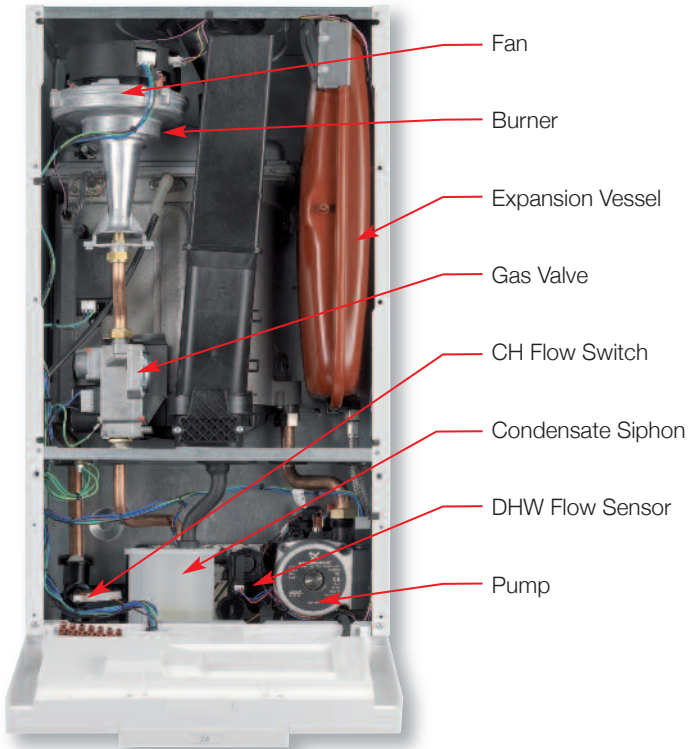
The Exclusive range is backed by a 2 year parts and labour warranty to ensure complete peace of mind.

Quick and simple to install, the Pro Exclusive is the perfect choice for both the installer and homeowner.

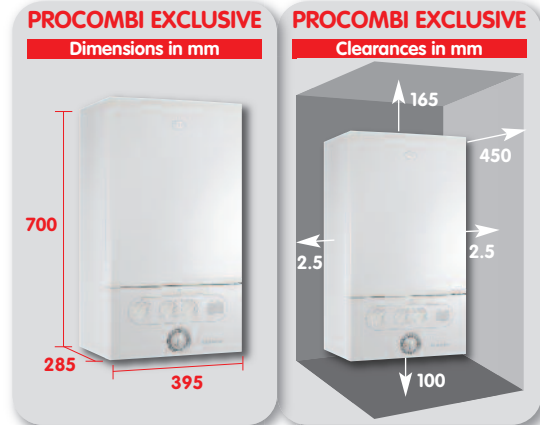


	24kW Code: 112360	30kW Code: 112361	35kW Code: 112362
DIMENSIONS			
Height (mm)	700	700	700
Width (mm)	395	395	395
Depth (mm)	285	285	285
WEIGHT			
Weight Packed (kg)	34.6	34.7	34.8
Maximum Installation Weight (kg)	30.85	30.95	31.05
PERFORMANCE			
Heat output (kW)			
Min/Max @ 70°C	4.8 - 24.2	6.1 - 24.2	7.1 - 24.2
Min/Max @ 40°C	5.1 - 25.6	6.4 - 25.6	7.5 - 25.6
DHW Output (kW) Max	24.2	30.3	35.3
DHW Flow Rate L/min 35°C Rise	9.9	12.4	14.5
SEDBUK (2005)	91.0%	91.0%	91.0%
SEDBUK (2009)	89.0%	89.0%	89.0%
NOx Classification	CLASS 5	CLASS 5	CLASS 5
Adjustable to LPG	No	No	No
CONSTRUCTION			
Heat Exchanger Material		Aluminium - Silicon Alloy	
Burner Type		Downward Firing Pre-Mix	
Fully Modulating	Yes	Yes	Yes
DHW Plate Heat Exchanger	Yes	Yes	Yes
Integrated Hydroblock	Yes	Yes	Yes
INSTALLATION			
Suitable for Sealed Systems	Yes	Yes	Yes
Expansion Vessel	8 Litre	8 Litre	8 Litre
Suitable for Open-Vent Systems	No	No	No
No Compartment Ventilation	Yes	Yes	Yes
Flow Regulator	Yes	Yes	Yes
Inbuilt System Bypass	Yes	Yes	Yes
Inbuilt 75mm Condensate Siphon	Yes	Yes	Yes
Inbuilt Boiler Frost Protection	Yes	Yes	Yes
Pump & Diverter Valve Exercise (24hr)	Yes	Yes	Yes
Anticycling	Yes	Yes	Yes
CLEARANCES			
Top (From Top of Boiler)	165mm	165mm	165mm
Side	2.5mm	2.5mm	2.5mm
Bottom	100mm	100mm	100mm
Front	450mm	450mm	450mm
USER INTERFACE			
User Display		Digital (Alpha/Numeric)	
User Controls		Digital Display with Manual Controls Preheat Switch with DHW Control & CH Control	
Diagnostics		Digital (Alpha/Numeric)	
Inbuilt Programmer		Mechanical Timer Standard	
Pressure Gauge		Yes, on Valve Connection	
OPTION KITS			
Valve Cover Kit	Yes	Yes	Yes
Stand-Off Kit	Yes	Yes	Yes
RF Mech Prog Room Stat	Yes	Yes	Yes
Weather Compensation Kit	Yes	Yes	Yes
FLUES			
Max Horizontal	9m	8m	6m
Max Vertical	7.5m	7.5m	7.5m
FLUE OPTIONS			
High Level Flue Outlet Kit	Yes	Yes	Yes
Flue Deflector Kit	Yes	Yes	Yes
Flue Elbows & Extensions	Yes	Yes	Yes
CERTIFICATION & APPROVALS			
CE Certified	Yes	Yes	Yes
WRAS Certified	Yes	Yes	Yes

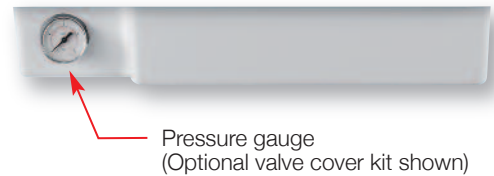
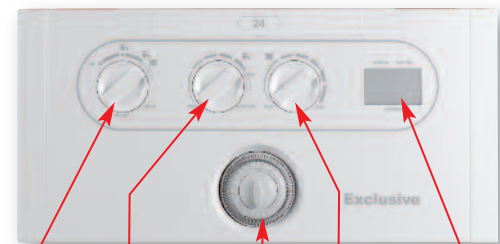
KEY COMPONENTS



DIMENSIONS & MINIMUM CLEARANCES



CONTROL PANEL & FLUE



FEATURES & BENEFITS

- SEDBUK band 'A' fuel efficiency rating to lower emissions and reduces heating bills
- 2 year parts and labour warranty
- Digital operating and diagnostics display
- User-friendly control panel to enable easy operation (including DHW temperature control)
- Wide range of outputs to suit all homes, including 24kW, 30kW and 35kW
- Choice of optional timers and room thermostats
- Boiler frost protection to guard against freezing temperatures

Replacing an old boiler with an A-rated boiler from Pro is a great way to reduce the heating bills and help the environment.

The Pro A-rated high efficiency boilers are over 90% efficient and could save up to £235 every year on running costs*, in addition to lowering the carbon footprint.

With ever rising fuel costs, there has never been a better time to upgrade to a Pro A-rated high efficiency boiler.

*Figure as quoted by the Energy Saving Trust

CONTACTS
Technical Helpline
01482 498700

2 year warranty
(including parts and labour)

Procombi Exclusive

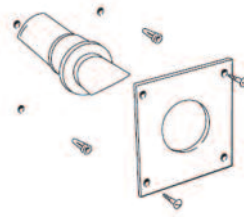
ACCESSORIES



Universal Weather Collar
Order Code 102899



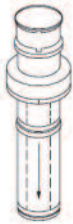
Flat Roof Collar
Order Code 102900



Flue Finishing Kit
Order Code 102880



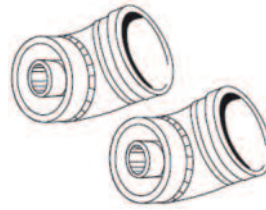
Flue Deflector
Order Code 102513



Roof Flue Kit
Order Code 102509



90° Elbow
Order Code 102507



45° Elbow (x 2)
Order Code 102508

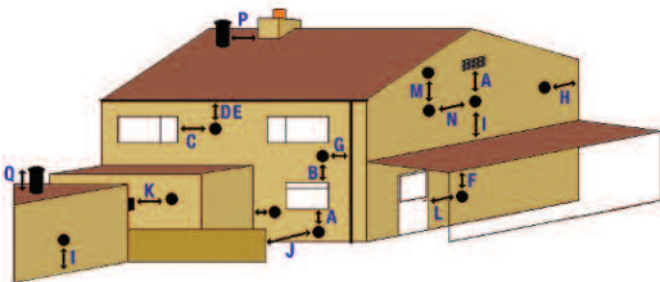


Vertical Connector
Order Code 102381

Order Code	Description	Part Number
112364	Stand Off Kit	207668
112365	RF Programmable Room Stat	207675
112366	Valve Cover Kit	207679
102899	Universal Weather Collar	152258
102900	Flat Roof Collar	152259
102880	Finishing Kit	155988
102506	1mtr Flue Extension	203129
102507	90° Elbow	203130
102508	45° Elbow (x 2)	203131

Order Code	Description	Part Number
102509	Roof Flue Kit	203132
102513	Flue Deflector	203137
102521	High Level 1mtr Extn	203228
102522	High Level 90° Elbow	203229
102523	High Level 45° Elbow	203230
102383	High Level Flue Outlet Kit	204912
102381	Vertical Connector	204645
102423	Condensate Pump	159991

FLUE TERMINAL CLEARANCES



Location

Location	Key	mm
Below an opening (window or air brick)	A	300
Above an opening (window or air brick)	B	300
To the side an opening (window or air brick)	C	300
Below gutter or drain/soil pipe	D	25
Below the eaves	E	25
Below balcony, car port roof etc	F	25
To the side of a drain/soil pipe	G	25
From internal or external corner	H	25
Above ground, roof or balcony	I	300
Surface or boundary facing the terminal	J	600
Horizontal terminal facing horizontal terminal	K	1200
An opening into a building from a car port	L	1200
Vertically from a terminal on the same wall	M	1500
Horizontally from a terminal on the same wall	N	300
Vertical terminal from wall or structure	P	300
From the top of vertical terminal to the flashing as determined from fixed collar	Q	625



Professional heating and plumbing products